

CLUE ON STAGE



ADAPTED FROM THE
SCREENPLAY BY
JONATHAN LYNN

WRITTEN BY
SANDY RUSTIN

ADDITIONAL
MATERIAL BY HUNTER
FOSTER & ERIC PRICE



ADAPTED FROM THE PARAMOUNT PICTURES
FILM WRITTEN BY JONATHAN LYNN AND THE
BOARD GAME FROM HASBRO, INC.
DIRECTED BY FACULTY MEMBER DR.
NICHOLAS HARRISON AND FEATURING
MEMBERS OF THE GRADUATING CLASS OF
ACTING FOR STAGE & SCREEN.

November 18th - 25th

THE BLUESHORE AT CAPU
2055 PURCELL WAY
NORTH VANCOUVER

Caputheatre.com



CLUE: ON STAGE

ARTISTIC TEAM

Dr. Nicholas Harrison – Director
Soleil Kovács - Assistant Director
Marija Djordjevic - Costume Designer
Bianca Briochi - Assistant Costume Designer
Michelle Couture - Assistant Costume Designer
Arthur Traynor- Assistant Costume Designer
Brian Ball - Set Designer
Steve Charles - Sound Designer
Gerald King - Lighting Designer
Hina Nishioka - Associate Lighting Designer
Nicole Iwaasa - Assistant Lighting Designer
Kyra Erickson - Assistant Lighting Designer

CAST

Adriana Ens – Yvette
Sam Eaves – Wadsworth
Anthea Lavergne – Cook/ Ensemble
Hunter J Wyatt – Colonel Mustard
Eliselle Pingol – Mrs. White
Chardonae Manuel – Mrs. Peacock
Mason Mintz – Mr. Green
Julia Gama – Miss Scarlet
Ryan Kearns – Professor Plum
Aidan Hardy – Mr. Boody/ Ensemble

Adapted from the screenplay by Jonathan Lynn • Written by Sandy Rustin • Additional Material by Hunter Foster & Eric Price • Adapted from the Paramount Pictures film written by Jonathan Lynn and the board game from Hasbro INC. Produced by special arrangement with Broadway Licensing (www.broadwaylicensing.com)

PRODUCTION TEAM

Production Manager	Mark "Sparky" Lawrence
Technical Practicum Supervisor	Mat Herrmann
Props and Paint Supervisor	Michel Ostaszewski
Stage Manager	Chase Skelton
Assistant Stage Manager	Cole Getz
	Cienna Pyke
Lighting Operator	Madelyn Fuduric
Sound Operator	Miles Murphy
Fly Operator	Alex Buckley
Stage Hands	Sarah Landrath
	Kris Valencia
Carpenters, Props, Paint, Lights	Alex Buckley
	Kyra Erickson
	Madelyn Fuduric
	Cole Getz
	Ryan Ghasemikian
	Matthew Goncalves
	Nicole Iwaasa
	Sarah Landrath
	Ewan Moullin
	Miles Murphy
	Kayla Nielsen
	Cienna Pyke
	Bella Rose
	Stefan Semke
	Chase Skelton
	Kayli Taylor
	Kris Valencia

COSTUME DEPARTMENT

Costume Instructors	Marija Djordjevic
	Corrine Larson
Lab Supervisor - Workroom	Derek Baskerville
Lab Supervisor - Cutter	Cathy Seiler
Lab Supervisor - Dressers	Megan Wiebe

Assistant Costume Designers	Bianca Briochi Michelle Couture
Costume Coordinators	Arthur Traynor Kira Konopacki Bri Chen
Assistant Coordinators	Rowan Adams Diba Golbarg
Head of Accessories	Gracie Berger-Poll
Make-Up & Hair	Tyler Korst-Macdonald
Accessories Assistant	Lydia Holland Lue Khalil
Make-up & Hair Assistant	Madeline Emmonds
Buyer	Silvana Acosta Moreno
Cutters	Caitlyn Baird Alex Beilin Kat Bounds May Ging Humphrey Sarin Kendall Emily Krahn Gwyneth Steiner
Stitchers	Katie Baskerville Michelle Blaine Alex Boski Emma Horgan Emily McKay Addie Sharp Maria Theodoropoulou
Head of Dyeing and Breakdown	Grace Worosz
Dyeing and Breakdown	Cassidy Perrin Kayliss Reynolds
Shoes	Harris, Emma Kate Davies
Ass't Costume Shop Managers	Des Hale Vienna Tambre
Head Dressers	Kira Konopacki Bri Chen
Dressers	Madeline Emmonds Harris, Emma Diba Golbarg Cassidy Perrin

ABOUT CLUE: ON STAGE

It's the 1950s and while the hunt to round up Communist sympathizers in America is well underway, a rather peculiar dinner party is about to take place.

The weather outside...well, it's frightful. The night is cloaked in darkness and punctuated by thunder and lightning. Trudging through the rain, a peculiar and clandestine gathering is afoot. Welcome to Boddy Manor, where six shadowy figures converge with intentions as murky as the tempestuous night itself.

This is no ordinary dinner party. The sinister specters of murder and blackmail loom over the evening's festivities, led by the ever faithful and diligent butler, Wadsworth.

As the events unfold the guests will be faced with a horrible accusation. Someone in the manor is a murderer. Is it Mrs. Peacock, ensconced in the dimly lit study, wielding a lead pipe with an air of treacherous intent? Or did Colonel Mustard, with his ominous fortitude, lurk in the shadows of the library, ready to strike with a dagger?

In this bizarre and twisted soiree, the dinner guests embark on a deadly quest. Laughter and suspense intertwine as the audience tries to conclude who the murderer is.

The stage play is based on the 1985 cult film and the legendary game created by Parker Brothers. Prepare to be swept into a whirlwind of mystery, mayhem, and mirth, for CLUE ON STAGE will leave you laughing as you are brought to the ultimate conclusion.

DIRECTOR'S NOTES

The board game Clue has a very interesting history. According to [history.com](https://www.history.com/news/clue-game-origin-wwii), the game itself was borne out of boredom during the relentless air raids that plagued England during WWII. Anthony Pratt had been a musician prior to the war and played the piano during murder mystery events that unfolded in the countryside mansions that were all the rage for weekend entertaining. Pratt re-created the games in miniature as a board game (initially called Murder!). His wife, Eva, designed the playing board and it was sold after the war to the English company Waddingtons and their American counterpart Parker Brothers. The stage play nods to the UK game company with the character of Wadsworth. There is a great article on the history channel's website where you can learn more about the origins of Clue: <https://www.history.com/news/clue-game-origin-wwii> where I was able to find the more finer details of the game's origin mentioned above.

The thing I love most about directing are the endless possibilities that can result from the collaboration between all the elements that make up the production cast and crew. This performance is a combination of taking the script and collaborating with the cast and crew on how to make our performance unique. How do you stage a play with several locations within an expansive manor? Creativity. This group of tech and acting students are genuinely a joy to work with and tackled the issues of the performance with alacrity and grace. I hope that you, the audience, will suspend your disbelief and immerse yourself in this unlikely whodunit presentation tonight. Please be sure to silence your phones and pay close attention to find out who the murder may be. I hope you find this evening's murder to be delightfully entertaining.

– *Nicholas Harrison*

PRODUCTION TEAM BIOS

Dr. Nicholas Harrison – Director

Dr. Nicholas Harrison was trained as an actor in London, England and the London Academy of Performing Arts, has a Masters in Directing from the University of Victoria, and a PhD from the University of British Columbia. His book, *Safe Space: The True Story of Faith, Betrayal and the Power of the Force*, was published in 2022 and is available from online booksellers. At present he teaches theatre and film at Capilano University, stages violence for various theatre companies, and continues to act in film and television. In his spare time he likes to raise money for various charities including Make a Wish and Children's Hospital through his work with the 501st and Rebel Legions. He lives and plays with his daughter in the traditional territory of the Tsawwassen and Musqueam First Nations. For more information please check out his website - nicholasjharrison.com.



Soleil Kovács Assistant Director

Soleil is an Acting For Stage And Screen student at Capilano University, thrilled to be making her first foray into assistant directing with *Clue*. Relishing in the conception of all mediums of performing art, her most notable directing experience includes the anti-fascist short film, *Humans Suck*, as well as the controversial multi-media performance of grey matter. Outside of rehearsals, she is perpetually curating her breakout manifesto. Soleil hopes that you enjoy watching the show as much as she enjoyed contributing to it.



Marija Djordjevic Costume Designer

Marija is an internationally acclaimed costume designer and educator whose designs graced many stages throughout Europe, the US, and Canada. Marija's keen eye for detail and the ability to elevate cuts and designs to create unique costumes has garnered her numerous awards and nomination in the field of costuming, including the USITT's Z. Weisfeld Award for Costume Design, a nomination for the New York Innovative Theatre Award in Design, and Montreal's META award.

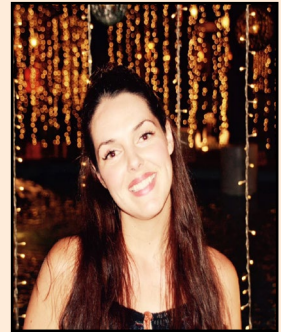
Arthur Traynor – Assistant Costume Designer

Arthur Traynor is a costume designer who loves all things unique, bold, and colourful. With an eye for detail, and a love for the visual arts, he was one of the keen assistant designers for Clue.



Michelle Couture – Assistant Costume Designer

Since she was a young girl, Michelle Couture has always been passionate about fashion and costumes. This passion led her to pursue a higher education in costuming and design at Capilano University. Some roles that she has taken on have been Costume Dresser, Accessorist, Stitcher, Dye and Breakdown Artist, Set Costumer, Shopper and Assistant Costume Designer. Michelle knows that if she wants to become a successful Costume Designer, she'll need to master every role in the costume department on her way there. Michelle is passionate about the art that is Costume Design, as each costume defines the character and is an essential part of storytelling.



Some of the productions she has worked on include The Twelfth Night, Carrie the Musical and Clue on Stage. She looks forward to working on The SpongeBob Musical in the spring.

Bianca Brioschi – Assistant Costume Designer

Born in Milan, Italy, she studied fashion styling and creative direction at Istituto Marangoni in Paris. After working as a stylist and stylist assistant in France and the U.S., she began her costuming journey working on movie and commercial sets in Italy which pushed her to enroll in the costume for stage and screen program at Capilano University to learn more. This is her third play here, the first one as a costume designer's assistant. She's very excited for Clue and is very proud of the hard work of the cast and crew!



Gerald King - Lighting Designer

Arts Club, Ballet BC, Bard on the Beach, Kokoro Dance, Theatre Calgary, The Citadel, Royal Manitoba Theatre Centre, National Arts Centre, Chicago Shakespeare Theatre, Dance Theatre of Harlem, Ballet BC, Douglas College. Selected recent credits include: Arts Club Theatre - *Matilda* and *Beauty and The Beast*. Bard on The Beach - *Shakespeare in Love*, *As You like It*. Vancouver Opera- *The Merry Widow*, *Otello*, *La Boheme*, *Evita*. Royal Winnipeg Ballet - *Fairie Queen*.



Brian Ball - Set Designer

Brian Ball is a BC based Artist and Designer. After completing his BFA in Visual Arts from Memorial University (Newfoundland) he moved BC to complete his MFA in Theatre set and Costume design at UVIC (Victoria). After many years of working in film and TV he returned to Theatre and has been designing full time across Canada from British Columbia to Newfoundland. Locally Brian has designed for the Arts Club, Gateway Theatre, Theatre Under the Stars, and more.



Steve Charles - Sound Designer

Steve Charles is a composer, performer, multi-instrumentalist, and sound designer. Highlights include working with Bard on the Beach, Arts Club, VACT, Playhouse/MTC, Boca del Lupo, Bluemouth Inc. With the Escape Artists, he collaborated on *Miss Shakespeare*, *Glory*, *Hey Viola!* and he continues to perform in their show *Chelsea Hotel* in theatres across Canada. He tours internationally with bands The Fugitives, Forro do Cana, and Viper Central.



Nicole Iwaasa - Assistant Lighting Designer

Nicole is a second year student of the Technical Theatre program. She is excited to take on the role of Assistant Lighting Designer under Gerald King and Hina Nishioka. It is her hope that under their tutelage and further experience she will expand her opportunities in the entertainment field.





Kyra Erickson - Assistant Lighting Designer

Kyra is in her second and final year for the Technical Theatre program. She is ecstatic to be working as an Assistant Lighting Designer under Gerald King and Hina Nishioka for *Clue: On Stage* and *Weasel*. Kyra has been interested in lighting all throughout high school and previously was the lighting operator for *Carrie the Musical*. She is looking forward to a life full of lighting design.



Chase Skelton - Stage Manger

Chase Skelton is ecstatic to be part of the SM Team for *Clue*. He is in his 2nd and graduating year in Capilano Universities Technical Theatre Program. Chase has worked on previous shows at Capilano including *Twelfth Night*, *Wolves*, and *Carrie: The Musical* in his first year. Once he graduates, he hopes a career in the film industry with the skills he has learned from Capilano.



Cienna (Kiki) Pyke – Assistant Stage Manager

Cienna (Kiki) is very excited to be assistant stage-managing *Clue* as her first Capilano production. As a first year TECT student she's very excited to have an amazing show to start her off. She's grateful to the amazing cast and crew who put together this wonderful show, and she hopes you enjoy it!



Cole Getz – Assistant Stage Manager

Cole is a second year TECT student at Capilano University, and has enjoyed being an Assistant Stage Manager for *Clue*. Previously, Cole has worked on *12th Night or What You Will*, *Anatomy of Grey*, and *Carrie at Capilano*, as well as *That's Not How I Remember It!* at his high school. Enjoy the show!

CAST BIOS

Aidan Hardy (Mr. Body/ Ensemble) is thrilled to perform his first show on the Blueshore Stage as the role of Ensemble Man in *Clue*, playing a variety of characters, who may or may not meet a grim demise. Aidan hopes that you enjoy the twist and turns, quirks and disarrays, and all other forms of tomfoolery that can occur at Boddy Manor.



Adriana Ens (Yvette) is incredibly excited to be involved in Capilano University's production of *Clue*. Last year she had the delight of playing Rebecca in Capilano's production of *Anatomy of Gray*. Adriana graduates in the spring and looks forward to the future roles she will fall in love with, in her professional career.



Chardonae Manuel [she/her] (Mrs. Peacock) is enthusiastic about being part of the *Clue* cast with CapU Theatre. Past stage credits include *Anatomy of Gray* with Arbutus Studio and *And Then There Were None* with Kitsilano Theatre Company. Other acting experience includes multiple short films with independent productions. Before coming to Capilano University, Chardonae spent her teen years exploring Southeast Asia with her family while based in Bali, Indonesia. In addition to her passion for acting, Chardonae loves cats, matcha lattes, and reality TV. She hopes you all laugh, cry, and love the experience of *Clue*!





Mason Mintz (Mr. Green) is ready for their second run at *Clue*! Having done plays and musicals all throughout high school which included a run of *Clue* as the cop, but this time Mason is invited to the party! As well as a studio show with CapilanoU last year with *Anatomy of Gray*, Mason will be graduating the ASAS program in the spring, but tonight Mason is eager to give you a manor-crawling mystery!



Ryan Kearns (Professor Plum) is excited to be a part of this fall's production of *Clue*! Ryan is training in Capilano University's Acting for stage and screen program. He hopes to one day show his friends and family a movie he's in.



Anthea Lavergne (Cook/ Ensemble) is dying to be in Capilano University's production of *Clue*. Acting is no mystery to Anthe, having been in several productions including *Oklahoma*, *Singin' In the Rain*, *Noises Off*, and *Anatomy of Grey*. Anthea hopes everyone has a thrilling time!



Eliselle Pingol (Mrs. White) is thrilled to be performing in Capilano University's production of *Clue*! She takes the stage as a confident and self-beloved individual who or may or may not have murdered her 5 ex husbands. Last year, Eliselle had the pleasure of playing Sarah in Capilano's production of *Anatomy of Gray*. Eliselle graduates from Capilano's acting program this spring and is eager to see where this career takes her.

Hunter J Wyatt (Colonel Mustard) is ecstatic to perform as Colonel Mustard in *Clue: On Stage*. He has enjoyed bringing performances to life in all of his years of education and is incredibly excited to make his BlueShore debut for this show. When not working on assignments and practicing lines, Hunter enjoys writing and performing music and watching as many films as humanely possible with his spare time. Hunter would like to thank all of his friends and family who have supported him in his journey as well as every audience member for coming out to see the show.



Julia Gama (Miss Scarlet) is from Brazil and quit her corporate career to pursue her dream of becoming an actor. After a couple of years of professional experience in films, commercials and theatre in Brazil, she decided to move to Vancouver and go back to acting school. As a later-in-life actor, Julia is grateful for having the chance to change the course of her life and start a second act. She's thrilled to bring the role of "Miss Scarlet" to life in CapU's production of *Clue*. Julia can't wait to get her professional break on Canadian soil after she graduates from the Acting for Stage and Screen program at Capilano University in April 2024.



Sam Eaves (Wadsworth) is mad excited to be playing Wadsworth in this year's *Clue!* He has had a blast making sure everything is spotless and sparkling for you today. Sam grew up in North Vancouver, raised by English parents (that's why his English accent is so brilliant). Much of his prior acting experience came at SMP's Pantomimes on Upper Lonsdale and he is very happy to continue that lively, energetic style of performance here at Capilano. This is Sam's third and final year in the ASAS program at Cap and he is going out with a bang!



